

# **THRASHER OPERA HOUSE VENUE & TECH INFORMATION**



THRASHER  
OPERA HOUSE  
GREEN LAKE, WISCONSIN

## **2025**

*Monday, January 6, 2025*

**Address:**

Thrasher Opera House  
506 Mill Street • PO Box 4  
Green Lake, Wisconsin 54941  
[info@thrasheroperahouse.com](mailto:info@thrasheroperahouse.com)

**Telephone:**

Primary Phone Number: 920.294.4279  
[REDACTED]  
[REDACTED]

**Personnel:**

Executive Director: Rachael Avery  
Production Manager: Riley Icenogle  
Marketing Director: Jason Mansmith  
Development Director: Katie Menting  
Box Office & Events Manager: Kayla Reeves

[rachael@thrasheroperahouse.com](mailto:rachael@thrasheroperahouse.com)  
[thinicesound@gmail.com](mailto:thinicesound@gmail.com)  
[jason@thrasheroperahouse.com](mailto:jason@thrasheroperahouse.com)  
[katie@thrasheroperahouse.com](mailto:katie@thrasheroperahouse.com)  
[kayla@thrasheroperahouse.com](mailto:kayla@thrasheroperahouse.com)

**Load-In/Parking**

Load-in occurs in the Thrasher Opera House parking lot on the Northside of the building. Utilize the Wheelchair Accessible Parking stall to unload. Move the vehicle to any other spot in the lot after complete load-in. Door size is a standard 80"x36" entry door. Distance from door to stage is approximately 25'. A hand hydraulic lift is available for heavy items to lift on to the stage.

**Dressing Rooms/Green Room/Performers Restroom**

Rooms are located via the stage left staircase to the lower level. Temperature-controlled rooms include one common area, one dressing room, one green room (with sink, refrigerator, coffee pot & tea kettle), and one private bathroom. An iron and ironing board are available, along with many full-length mirrors. There are several garbage receptacles in the space as well.





### **WIFI**

In the lower level, we have two (2) networks.



In the performance space, we have two (2) networks



### **Social Media**

Facebook: @thrasheroperahouse

Instagram: @thrasheroperahouse

Spotify: thrashergreenlake

Hashtags: #thrasheroperahouse

### **Merchandise**

The merchandise area is in the rear of the venue. The site is high traffic. We have two 6' tables set up. Please let us know if you need to ship merchandise to the venue and use the following address. Thrasher Opera House 506 Mill Street Green Lake WI 54941. We do provide personnel to sell merchandise show evening. We typically utilize a 85/15 split for merch in our contracts. Please let us know if you will accept cash/checks/cards.

### **Stage Dimensions**

Width (inside the proscenium)	24'
Depth (depth without thrust)	16'
Depth (depth with thrust)	19'

### **Stage Draperies**

- 1 - Grand Drape Red - Stage Right Pulley
- 1 – Back Curtain Black – Stage Right Pulley
- 1 – White Wall - Stationary

### **Audio System**

Control/Playback (FOH)

- 1 - Allen & Heath SQ7 32 input/16 output
- 1 – Snake 32x8 (various drop snakes available)
- 6 – Passive Aux Mixes for monitors (we can accommodate in-ear mixes)

Loudspeakers (FOH) (2018 Install)

- 2 - Danley SM96 Flown
- 2 – Initial Sound Custom Subs



### Stage Monitors

- 8 - Turbosound – TFM 122-M (wedge)
- 1 - Electro-Voice ELX118P Subwoofer
- 1 - Electro-Voice ELX112P Powered Speaker

### Various Mics, DI's, Stands & Cables

1/8" plug is available for phones/tablets/computer/mp3 players  
We can accommodate Spotify playlists

### **Lighting System (See Light Plot Below)**

#### Control

- 1 – ETC ColorSource 40AV (2022 Install)
- 1 – Strand MX (Not in use)

#### Dimming

- 1 – ETC Echo Relay Panel (2022 Install)
  - 120/208V 3P 4W+G MLO includes 12 1-pole relays & 12 1-pole breakers

### **Lighting Inventory (See Light Plot Below)**

#### Balcony/FOH

- 6 – ETC ColorSource LED 14° barrel (w/diffuser) 5 pin DMX (2022 install)

#### Stage {3 Electrics}

- 9 – ETC ColorSource LED (w/diffuser) 5 pin DMX (2022 install)

#### Cyc

- 4 – ETC ColorSource Cyc LED 5 pin DMX (2022 install)

#### Moving Heads

- 4 – Chauvet Professional Maverick Force S Spot 5 pin DMX (2022 install)

#### Spotlights

- 2 - Lycian Midget 2K 1907

### **Enviromentals**

Chauvet Professional – Amhaze ECO Pro Haze Machine (2023 Install)

### **Projection**

Panasonic PT-MZ780BU7 with HDMI (2024 Install)

Projection Screen 15'x10' (throw distance 55')

The screen that drops in front of the stage (motorized) controls Stage Right

#### Back Up

Panasonic PT L6600 UL with VGA

USB-C to VGA Adapter



## **Backline**

### Drums

Yamaha Stage Custom

Bass drum 22"

Snare 14"

Toms 12" & 14"

### Cymbals

Zildjian A Custom Set

Hi Hat 14"

Crash 16" & 18"

Medium Ride 20"

Zildjian Ping ride 20"

Zildjian Thin Crash 17"

### Cajons

LP Black Box

On Stage Fixed Snare (has adjustment key)

### Piano

Steinway Grand, Model B (7')

Upright Piano on Opera House Floor

### Keyboards

NORD-Electro 6D-73 with Moog EP3-Universal Polarity Expression Pedal

### Amplifiers

SWR Black Beauty Bass Combo (400W)

Fender Deluxe Combo

Fender VibroLux Combo

### Miscellaneous

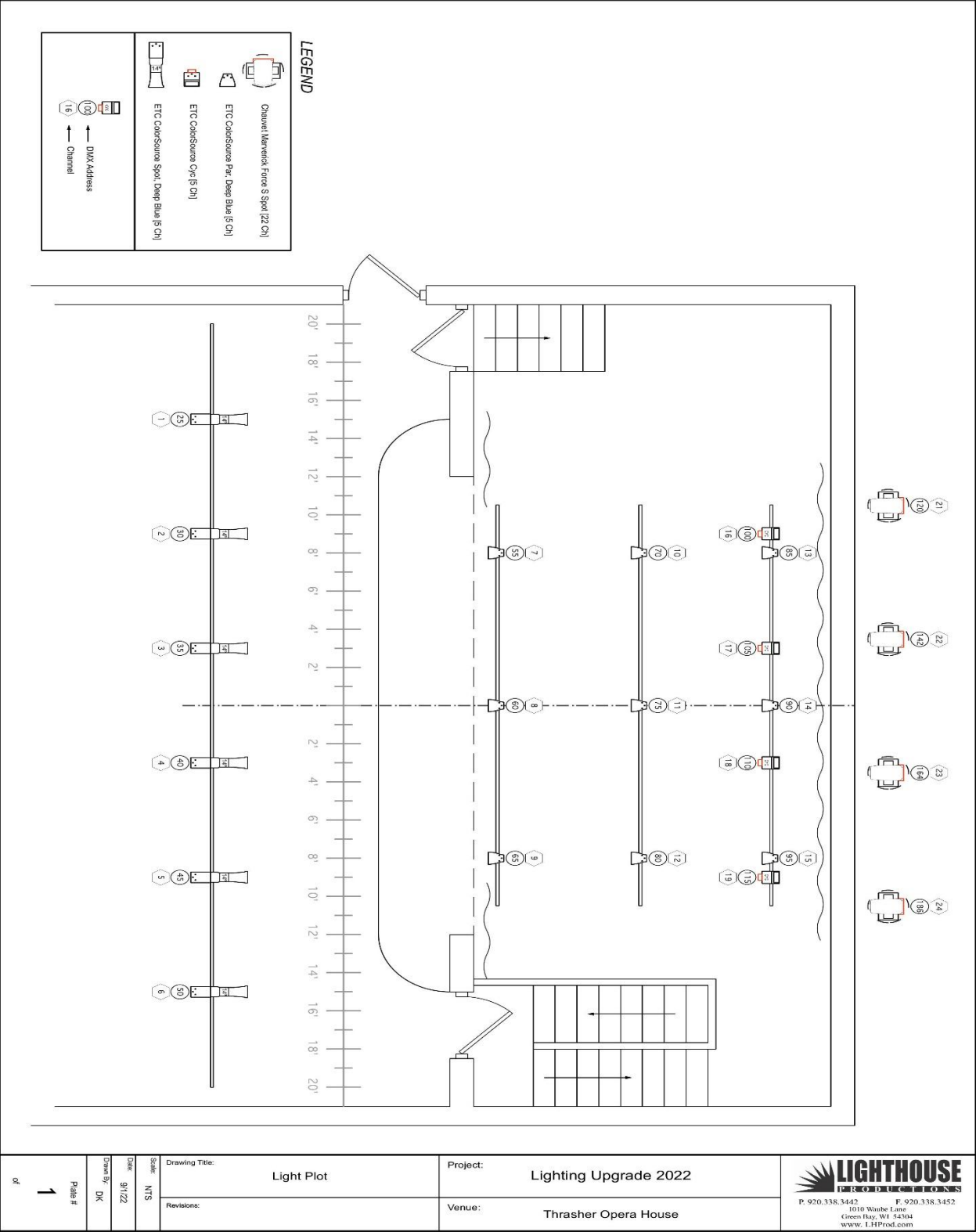
Guitar Stands

Amp Tip ups



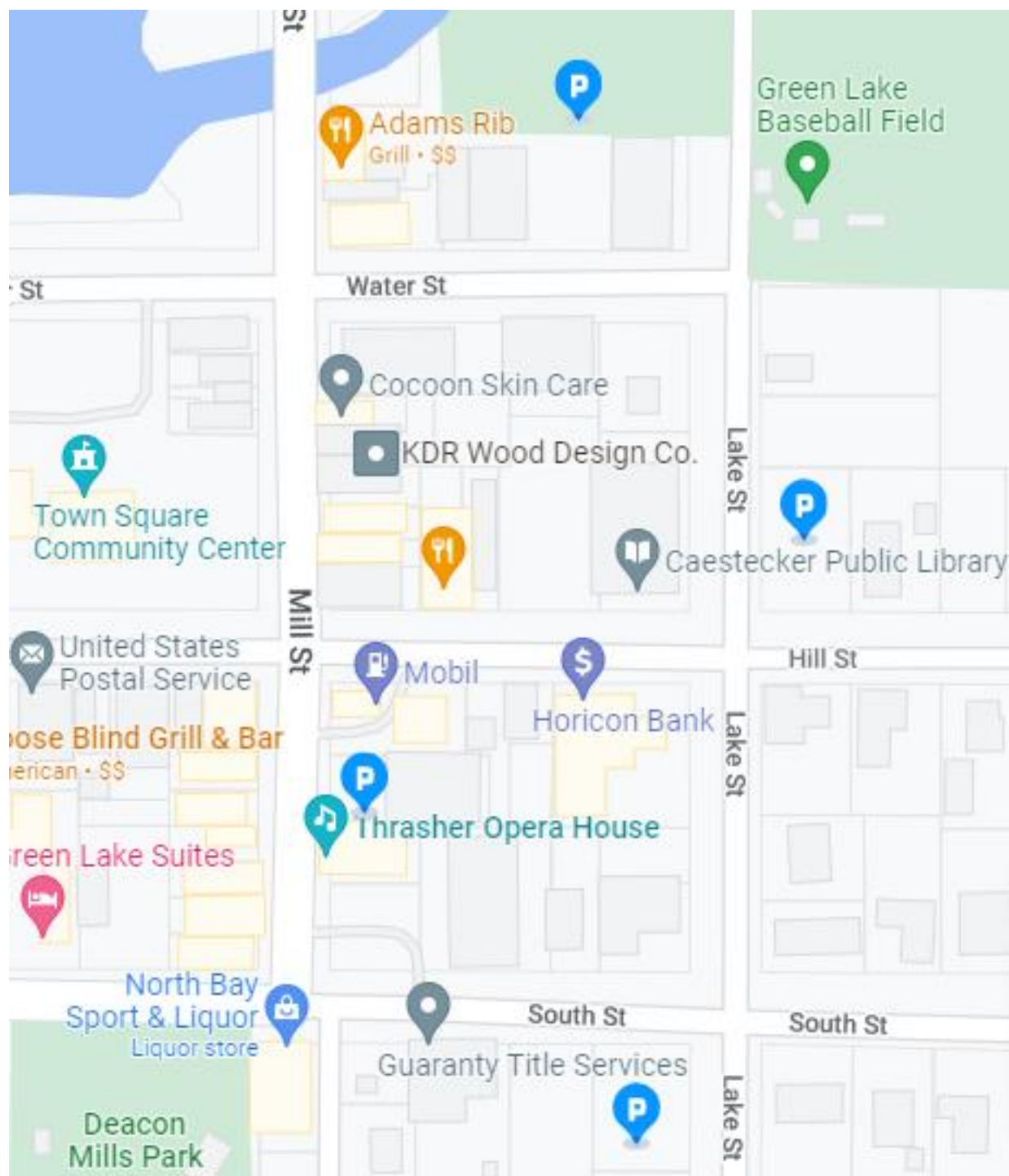


Lighting Plot





## Parking Information







### **Historical Notes & Information**

- Space was originally built in 1910 by Charlie Thrasher, for local performances, vaudeville theater, and silent movies.
- Underwent a major renovation and re-opened in 1998.
- Our facility is listed on the National Historic Site registry.
- Seats 200

### **Accommodations & Services**

Heidel House - 1.3 miles to Thrasher  
653 Illinois Ave. Green Lake, WI 54941 920.807.0300

Bayview Motel & Marina – 0.4 miles to Thrasher  
439 Lake Street, Green Lake, WI 54971 920.294.6504

Super 8 Motel – 8.3 miles to Thrasher  
227 Ripon Road. Berlin, WI 54923 800.454.3509

### **Police**

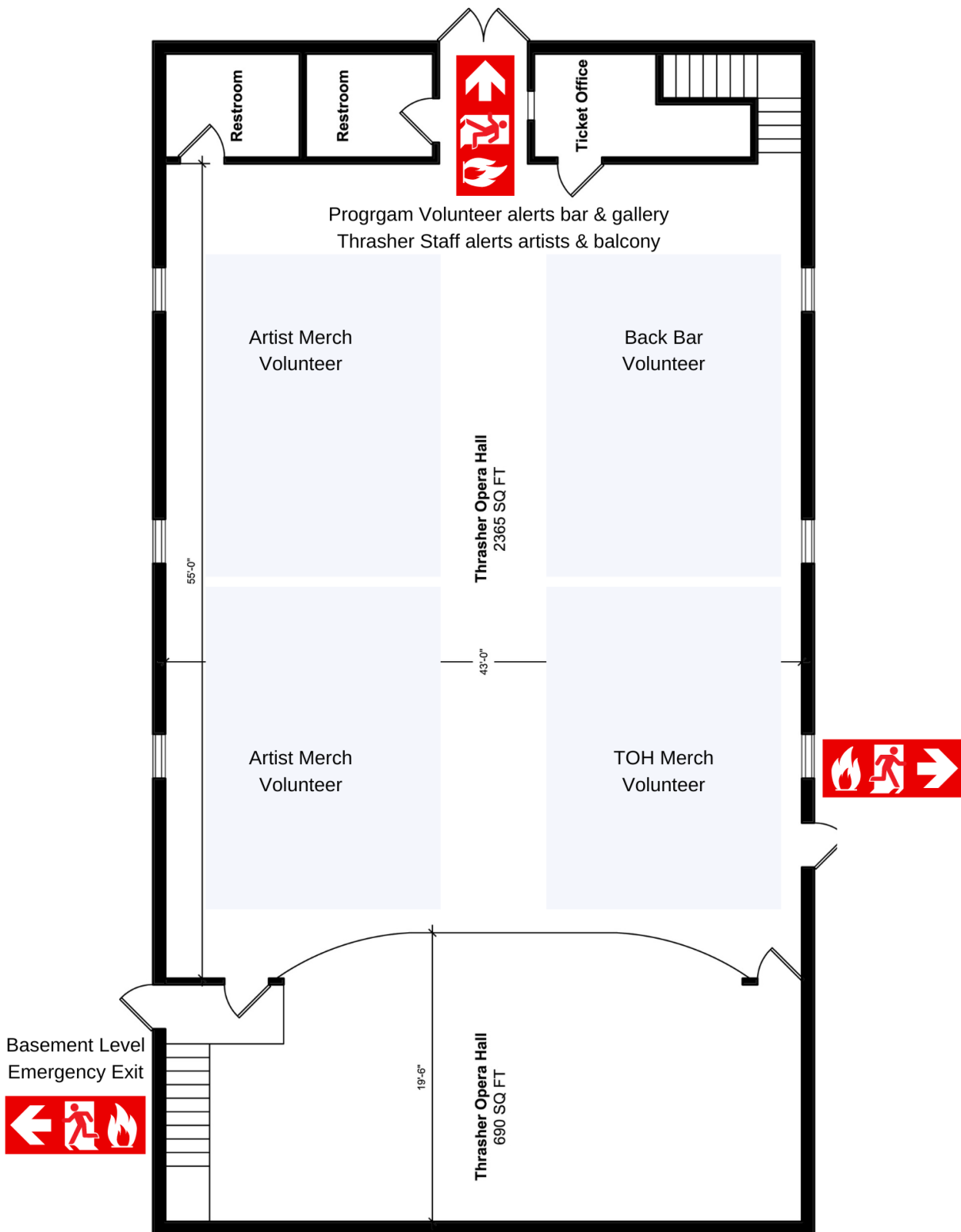
Emergency 911 or 920.294.6333  
AED located in Box Office at front of Opera House

### **Hospital**

Ripon Community Hospital – 845 Parkside St. Ripon, WI 54971  
ThedaCare Medical Center – 225 Memorial Dr. Berlin, WI 54923



## THRASHER OPERA HOUSE EMERGENCY EXITS





## Emergency Route to Deacon Mills Park from Thrasher Opera House

